

# **Addonics**

**T E C H N O L O G I E S**

## **Diamond Mobile Rack**

**DMRSAI & DMRII  
DMRSASC & DMRISC**

**User's Guide  
Version 1.0**

## **FCC Warning Statement**

This equipment has been tested and found to comply with the limits for a class B digital device pursuant to Part 15 of the FCC rules. These limits are designed to provide reasonable protection against harmful interference in a residential installation. This equipment generates, uses and can radiate radio frequency energy. If not installed and used in accordance with the instructions, it may cause harmful interference to radio communications. However, there is no guarantee that interference will not occur in a particular installation. If the equipment does cause harmful interference to radio or television reception, which can be determined by turning the equipment on and off, the user is encouraged to try and correct the interference by one or more of the following suggestions.

Reorient or relocate the receiving antenna

Increase the distance between the equipment and the receiver

Connect the equipment to a different power outlet other than the one where receiver is connected

Consult a certified television or radio technician

## **LIMITED WARRANTY**

Addonics guarantees that every product is free from physical defects in material and workmanship during the warranty period specified for each product when used within the limits set forth in the Specifications section in the user guide.

Unauthorized tampering of the product or using it outside the scope of the product specifications will result in voiding the warranty. If the product proves defective during this warranty period, call Addonics Technical Support to obtain a Return Authorization number. **BE SURE TO HAVE YOUR PROOF OF PURCHASE ON HAND WHEN CALLING. RETURN REQUESTS CANNOT BE PROCESSED WITHOUT PROOF OF PURCHASE.** When returning a product, mark the Return Authorization number clearly on the outside of the package and include your original proof of purchase. Customers are responsible for paying the shipping and handling of the products to Addonics warranty service location.

**IN NO EVENT SHALL ADDONICS' LIABILITY EXCEED THE PRICE PAID FOR THE PRODUCT FROM DIRECT, INDIRECT, SPECIAL, INCIDENTAL, OR CONSEQUENTIAL DAMAGES RESULTING FROM THE USE OF THE PRODUCT, ITS ACCOMPANYING SOFTWARE, OR ITS DOCUMENTATION.** Addonics makes no warranty or representation, expressed, implied, or statutory, with respect to its products or the contents or use of the user guide and all accompanying software, and specifically disclaims its quality, performance, merchantability, or fitness for any particular purpose. Addonics reserves the right to revise or update its products, software, or documentation without obligation to notify any individual or entity.

**Contents**

**FCC Warning** ..... 1  
**Limited Warranty** ..... 1  
**Contents** ..... 2  
**Chapter 1**     **Hardware Installation**..... 4  
                  **Cable Connections** ..... 5  
                  **Application for the Diamond Mobile Rack** ..... 6  
**Technical Support & Contact Information** ..... 7

## Chapter 1

### Hardware Installation Guide

#### Step 1

Use a Philips screwdriver to turn the cover securing screw into the "OPEN" position.



#### Step 2

Slide the aluminum cover towards the back end of the Diamond and remove it.



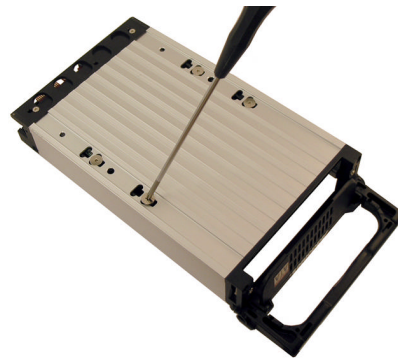
#### Step 3

Carefully place the SATA hard drive with the label facing up into the Diamond enclosure. Push the hard drive towards the back end to secure the drive connectors onto the Diamond enclosure's SATA connector.



#### Step 4

Turn the Diamond enclosure over with the hard drive mounting holes facing up. Use the included flat head screws to secure the hard drive onto the bottom of the enclosure and turn in the screw to the "LOCK" position.



#### For IDE Drive

**Note:** Set up your IDE hard drive as Master device

Connect the 4-Pin Molex cable to the power connector on the IDE hard drive. Carefully place the IDE hard drive with the label facing up into the Diamond enclosure. Push the hard drive towards the back end to secure the drive connectors onto the Diamond enclosure's IDE connector.

## Cable Connections

Model: **DMRSAI & DMRII**

### Power:

Using the 4-pin floppy connector of the Y-cable, connect it to the floppy-type power connector on the converter. To provide power for the y-cable, connect it to one of your desktop's 4-pin molex cable.

### Data:

Connect the IDE ribbon cable to the 40-pin IDE connector of the SATA to IDE converter board and to the IDE channel of your motherboard.

### LED cable:

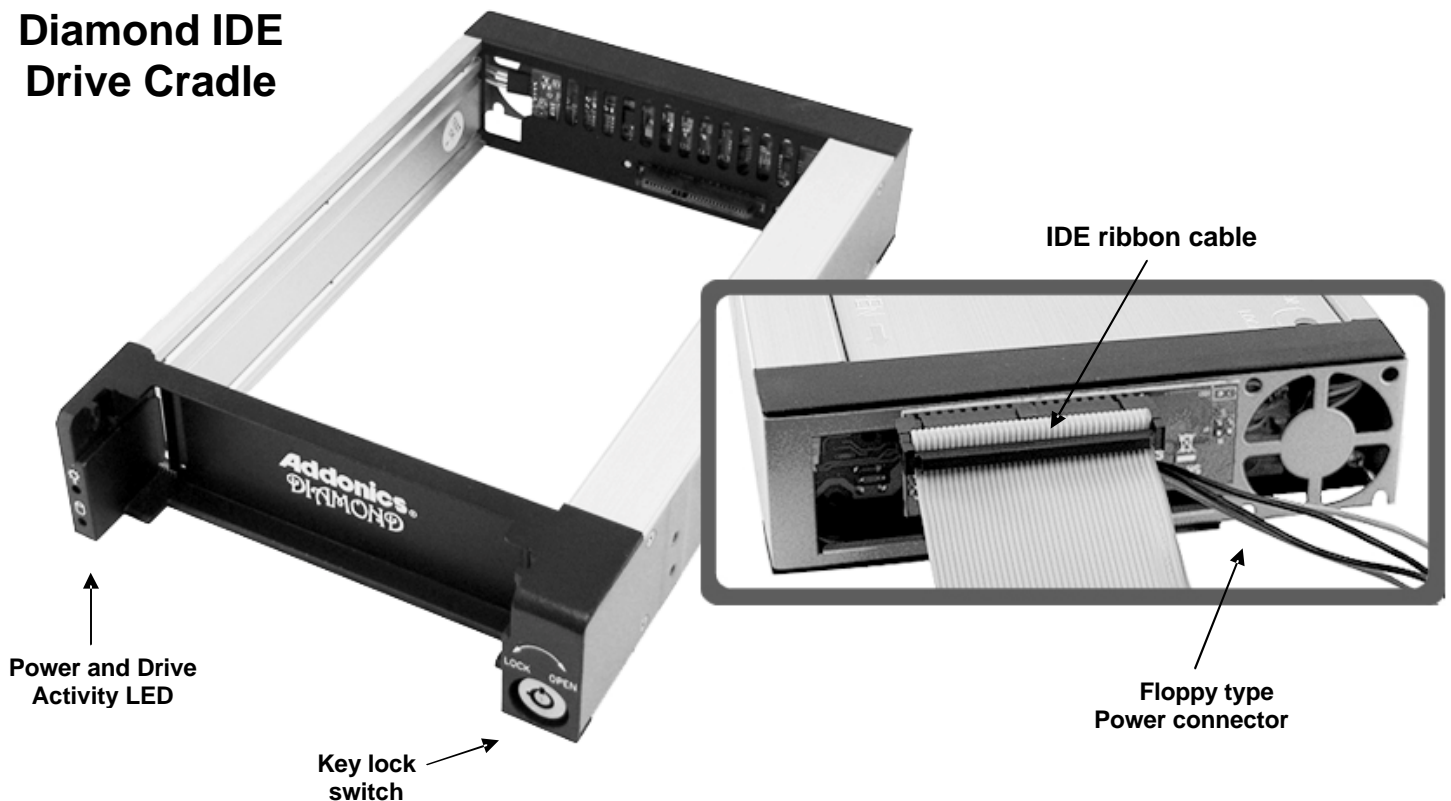
No need to connect. By factory default, LED signal would come from the hard drive.

### Powering On Drive Cradle:

To power on the drive cradle, slide in the Diamond cartridge and using the key (supplied), turn the cradle lock located at the front of the cradle to the LOCK position. This will provide power as indicated by the green LED lighting up and secure the cartridge.

Note: This configuration would not support hot-swap.

## Diamond IDE Drive Cradle



Model: **DMRSASC & DMRISC**

**Power:** Using the 4-pin floppy connector of the Y-cable, connect it to the floppy-type power connector on the converter. To provide power for the y-cable, connect it to one of your desktop's 4-pin molex cable.

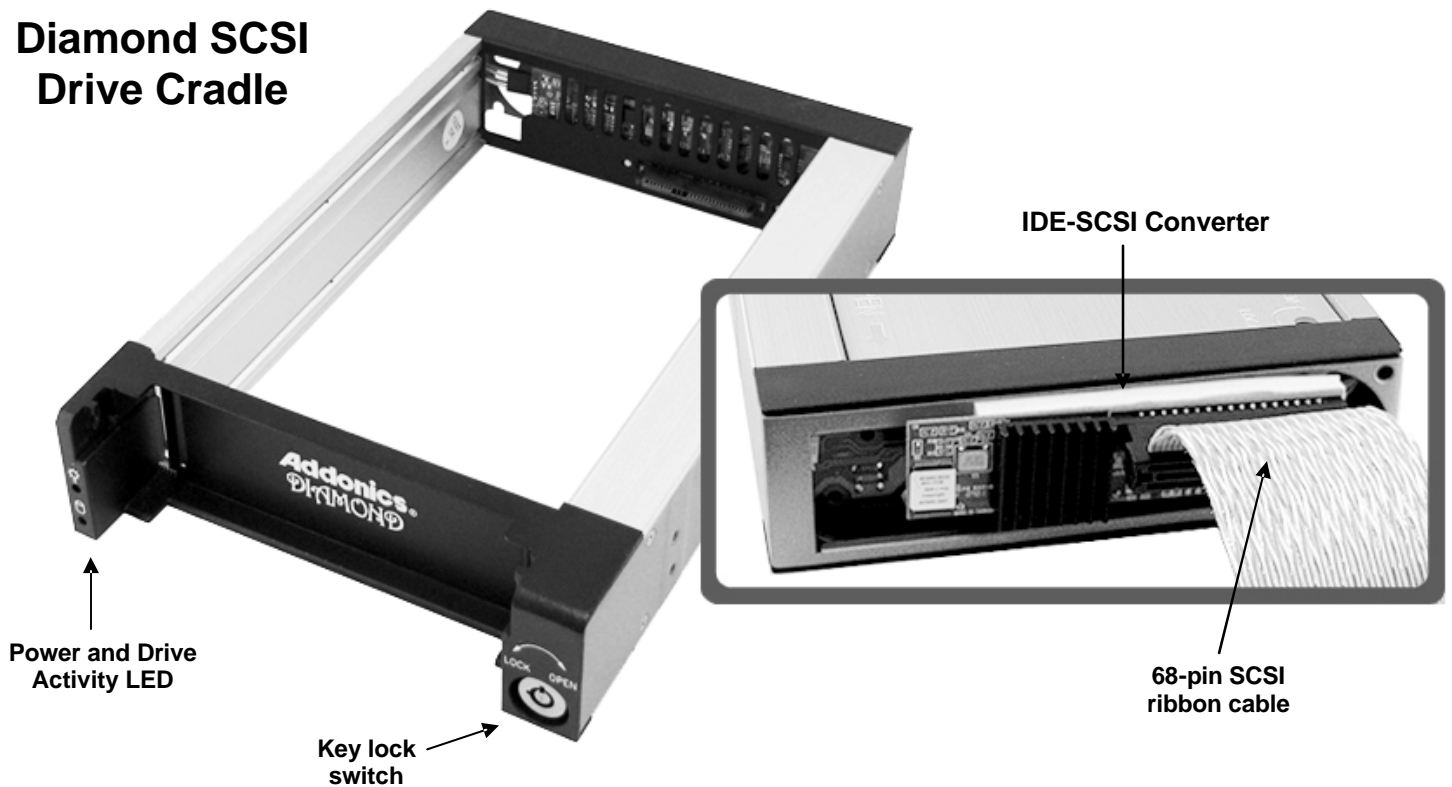
**Data:** Connect the SCSI cable to the 68-pin SCSI connector of the SATA to SCSI converter board and to your SCSI controller.

**LED cable:** No need to connect. By factory default, LED signal would come from the hard drive.

**Powering On Drive Cradle:** To power on the drive cradle, slide in the Diamond cartridge and using the key (supplied), turn the cradle lock located at the front of the cradle to the LOCK position. This will provide power as indicated by the green LED lighting up and secure the cartridge.

Note: This configuration would not support hot-swap.

## Diamond SCSI Drive Cradle



## Technical Support

If you need assistance to get your unit functioning properly, please call Addonics Technical Support. Our technical staff will be happy to assist you, but they will need your help to do so. Calling the technical support staff without all the proper information can be both time consuming and frustrating. Here are some tips to help you out:

MODEL NUMBER – Please have this number on hand.

SYSTEM INFORMATION – Type of computer, peripherals, etc.

OPERATING SYSTEM – What version of Windows

WHAT'S THE TROUBLE? – Give enough information about your problem so that we can recreate and diagnose it.

### **FREE Software Drivers for all Addonics Technologies**

**Products are available 24 hours per day at the**

**World Wide Web Site:** [www.addonics.com](http://www.addonics.com).

### **Contact Information**

Addonics Technologies  
2466 Kruse Drive  
San Jose CA, 95131

Phone: 408-433-3899

Fax: 408-433-3898

Email: <http://www.addonics.com/sales/query/>

Internet: <http://www.addonics.com>

### **TECHNICAL SUPPORT**

Phone: 408-433-3855

Hours: 8:30 am - 6:00 pm PST

Email: <http://www.addonics.com/support/query/>